



# **CHELAN COUNTY REGIONAL JUSTICE CENTER**

CURT LUTZ, DIRECTOR  
RON WINEINGER, DEPUTY DIRECTOR

## **2014 ANNUAL REPORT**

PREPARED BY: KRISTEN HANKINS, BUSINESS MANAGER

# TABLE OF CONTENTS

Director's Foreword	Page 3
Facility History and Overview	Page 4
Inmate Visitation	Page 5
Inmate/Volunteer Programs	Page 6
Work Release/Inmate Worker Programs	Page 7
Medical & Mental Health	Page 8
Food Service	Page 9
Facility Booking and Intake Statistics	Pages 10 – 12
Organizational Chart	Page 12

## **A FOREWORD FROM DIRECTOR LUTZ**

I am pleased to take this opportunity and share with you the Chelan County Regional Justice Center's 2014 Annual Report. This is our first attempt at creating such a report and I hope you will find the following pages informative. The goal of this document is to detail and focus on the many areas that comprise the Jail and its' functions.

Our daily mission at the Regional Justice Center (RJC) is to provide for the safety and security of the public, staff, and inmates. We are devoted to serving and keeping our community safe. As an agency comprised of 72 staff members, we provide inmates with education, work release and home monitoring programs, meals, medical, and transportation services.

In 2014, we were able to contract with outside agencies to house inmates in our facility on a per day basis. Some of the agencies that we house inmates for include: Bremerton, Kent, Kirkland, Lynnwood, Mercer Island, North Bend, Douglas County, Skagit County, Thurston County, Department of Corrections, and the Federal Government. With the revenues received we have been able to stabilize our budget and look forward to future growth prospects.

We have over 100 volunteers that provide religious, AA and NA services for inmates being housed in the facility. These volunteers are a critical part of the services that we provide, giving our inmates education and structure needed for spiritual and personal growth. We appreciate the volunteers who enter our building and look forward to a continued relationship with these services and programs.

One of the growing challenges in jails across Washington State is the handling of inmates with mental health and/or co-occurring substance abuse issues. Our dedicated staff is, at times, overwhelmed with requests for help and treatment. We have started new procedures to ensure that these individuals have an opportunity to speak with our mental health, medical, classification staff, and administration on a weekly basis. We have also reached out to several community organizations that have assisted our facility with collaboration and discussions on how to handle these inmates as we move forward.

The deputies, support staff, and administration of the Chelan County Regional Justice Center are to be commended for their consistent dedication to providing safety and security inside the walls of this facility. In addition, we appreciate the constant support received from the Chelan County Commissioners and other county departments involved in helping us meet our mission.

Creating this report has highlighted the need for further statistical analysis in our department. Analysis and data collection is an evolving project for the RJC; we hope to provide even more detailed and edifying information in subsequent Annual Reports.

***Curt Lutz, Director***

## **MISSION STATEMENT**

The Chelan County Regional Justice Center, through correctional options, effectively provides for the safety and security of the public, staff and inmates.

## **FACILITY HISTORY**

The Chelan County Regional Justice Center opened in 1984 with a 117 bed capacity, operating as a division of the Chelan County Sheriff's Office. Original partners in the Regional Justice Center were Chelan County, Douglas County and City of Wenatchee. The facility served law enforcement agencies within the two-county area, in addition to United States Immigration agencies and the Washington State Department of Corrections.

Over the next 8 years (1985-1992), the facility increased the number of beds from 117 to 156 through reconfiguration of existing inmate housing areas. In 1995, another major renovation converted an indoor recreation area and two expansion areas into dormitory-style cells. This renovation increased the number of beds to 197. In 2001, a 42 bed satellite facility housing minimum-security inmates was completed, and in 2005, a 66 bed Annex was completed to house Work Release and Inmate Worker participants. Total renovations through the years and "double bunking" in dormitory-type housing units resulted in the facility's current bed capacity of 383.

## **FACILITY OVERVIEW**

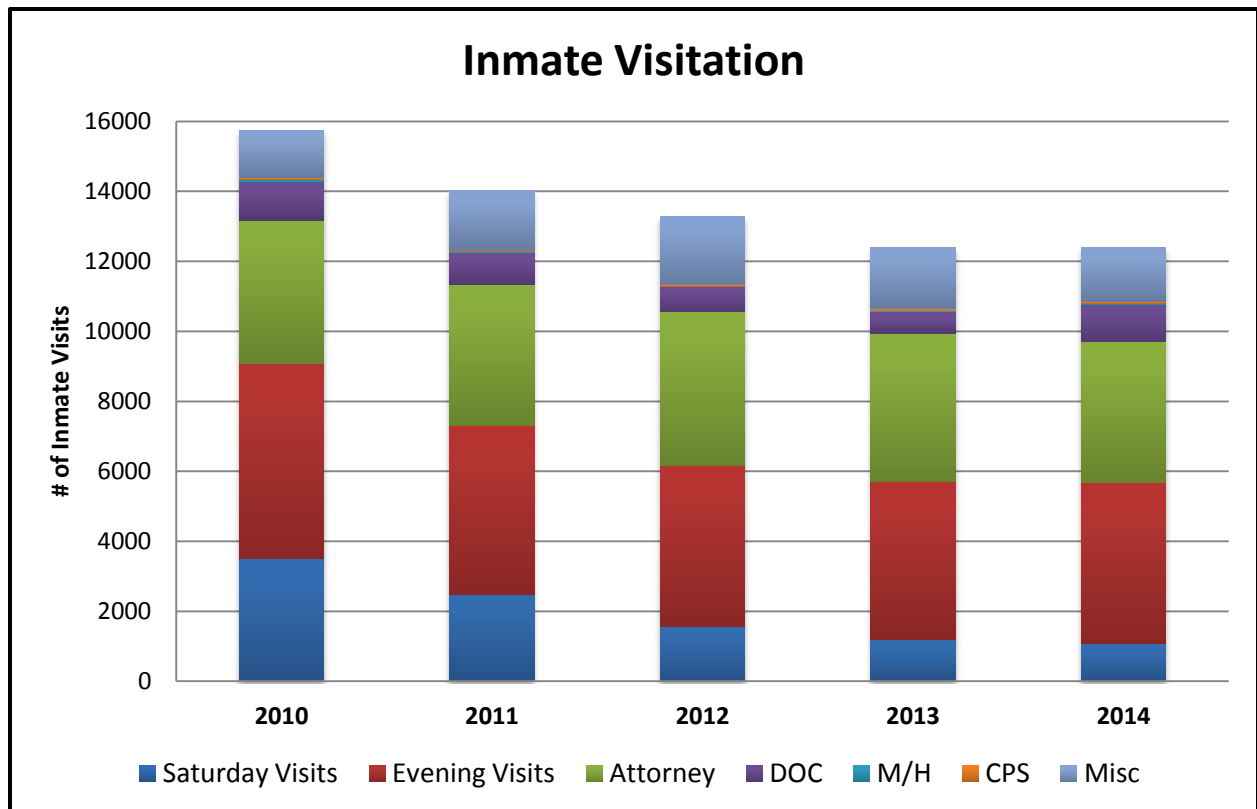
Chelan County Regional Justice Center (CCRJC) is a 383 bed adult correctional facility, located in the city of Wenatchee that services a population of over 94,000 people and encompasses a geographical area of over 5,000 square miles. CCRJC contracts with numerous cities in Western Washington for available bed space, and collaborates with both the U.S. Marshalls and Washington State's Department of Corrections. Satellite buildings include a 42-bed minimum security facility and a 66-bed direct supervision minimum security facility that houses Work Release and Volunteer Inmate Worker participants. Jail staff facilitates court appearances for inmates scheduled for Chelan and Douglas County Superior and District courts. Participation in Electronic Home Monitoring, Satellite Monitoring, and Work Release is available for court-approved, sentenced offenders. Basic medical, mental health and nutritional needs are met and provided for by support staff. All jail corrections staff are fully trained professionals dedicated to providing public safety.

## INMATE VISITATION

CCRJC encourages each inmate to maintain contact with their family and friends through visiting. Visiting times are Monday through Thursday at 8, 9, and 10 pm. There are also Saturday afternoon visits available at 1, 1:45, 2:30, and 3:15. Each visitor is allowed 1 visit during the week including Saturday, and inmates are allowed no more than 1 visit per day.

Inmates also receive visits from attorneys, the Department of Corrections (DOC), mental health professionals (M/H), and Child Protection Services (CPS). These visits are not scheduled and are conducted anytime except 5:30-8:30am, 11:15am-1:00pm, 4:15-6:00pm, and 6:45-7:15pm.

The chart below details a historical look at our inmate visitation. For reference, the “Misc” category includes visits from bondsmen, DSHS, juvenile, process servers, Catholic Family Services, The Center (for Alcohol & Drug Treatment), and private investigators.

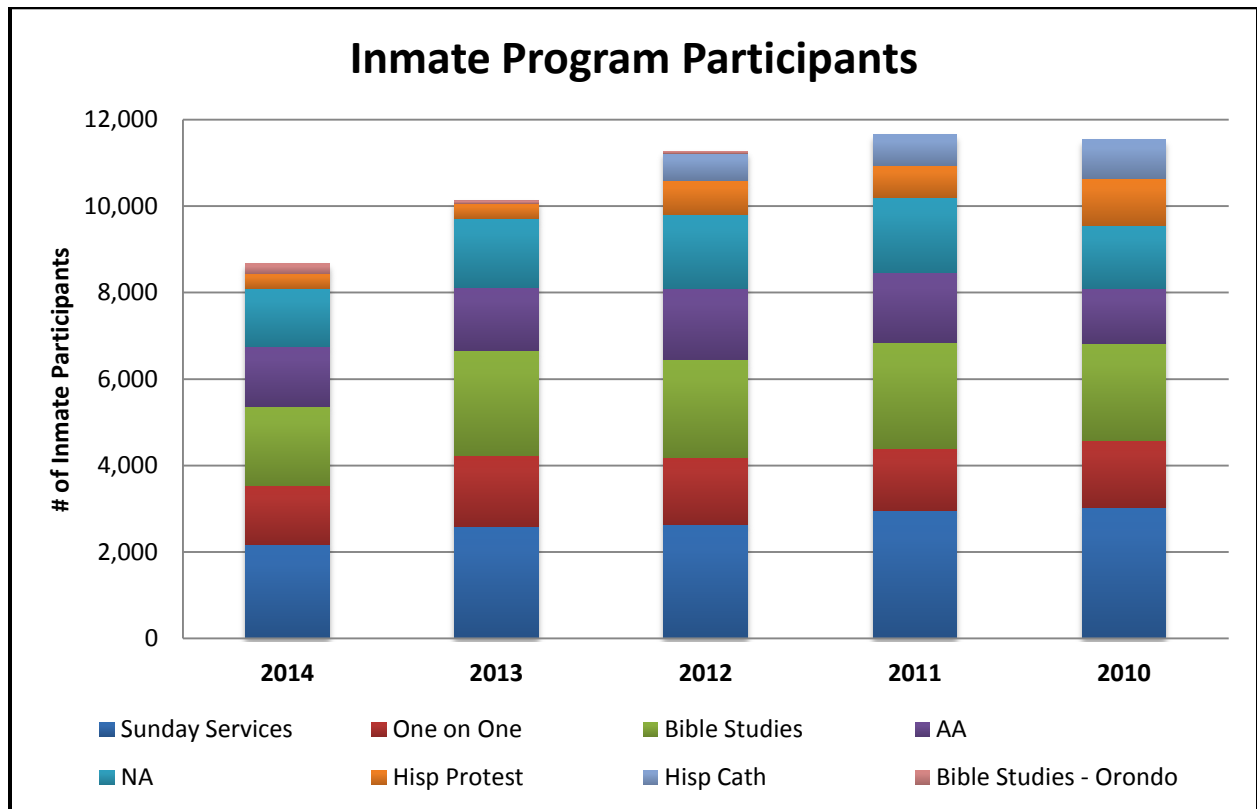


## INMATE/VOLUNTEER PROGRAMS

CCRJC's volunteer/contract programs are designed to offer inmates religious counseling, drug and alcohol counseling, and participation in Volunteer Inmate Work Crews. Volunteer/Contract organizations currently assisting inmates incarcerated at the Chelan County Regional Justice Center are:

- Religious counseling/services of different faiths
- Alcoholics Anonymous
- Narcotics Anonymous
- Inmate Work Crews for non-profit organizations
- Inmate Work Crews for governmental agencies
- Drug & Alcohol counselors
- Education program volunteers

Currently, CCRJC has over 100 active and current volunteers who participate and run programs and services for the benefit of inmates. The available program options provide support and guidance to those inmates who possess a sincere desire to make a change in their lives. It is a goal of the program office to provide incarcerated individuals with the tools needed for successful education and reentry into our community.

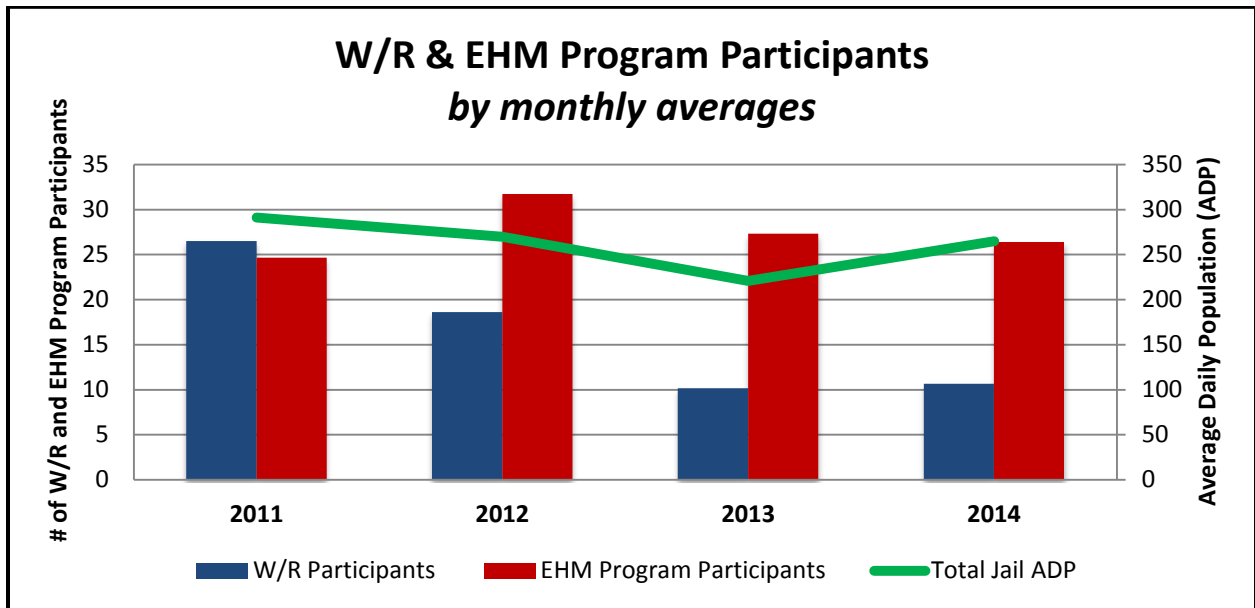


**WORK RELEASE, HOME & ALCOHOL MONITORING, INMATE WORKER PROGRAMS**

CCRJC provides options and alternative programs for court-approved, sentenced offenders. These options include: electronic home monitoring, work release, school release, and a weekender program.

If an inmate has been sentenced from a county other than Chelan, they still may be eligible, as long as prior court approval shows they may serve their sentence in the CCRJC Alternative Programs. Respectively, inmates may be denied based on criminal history, previous involvement in the program, jail classification, urinalysis testing, or risk assessment.

CCRJC has a staff of 4 who are entirely dedicated to the implementation of these programs.



CCRJC also provides inmate workers to various community organizations throughout Chelan County, including: City of Wenatchee parks, food distribution, YWCA, Ohme Gardens, Public Works, and county fairgrounds.

Inmate Workers: Total Hours	
2011	15,487
2012	15,603
2013	21,684
2014	22,836

## MEDICAL AND MENTAL HEALTH

### **Medical**

CCRJC's medical division includes 2 full time LPNs, 1 full time RN, 2 fill in nurses, and a Health Care Manager who runs the department. There is nursing coverage 17 hours a day during the week, and 12 hours of coverage per day on the weekends. Twice a week a PA-C and an ARNP provide inmate sick call needs, with a physician who oversees these individuals and visits monthly.

The medical department also works with a local nursing program, providing clinical experience to student nurses once a week within the facility.

The medical staff receives an average of 10-15 medical requests a day; these range from medication requests, injuries, to sick call requests. There are 3 jail-wide medication passes to inmates every day, and roughly 190-230 inmates taking medication within the facility at any given time.

### **Mental Health**

CCRJC has a full time Mental Health Coordinator who runs this department. Chelan County houses many inmates with mental illness issues, alcohol issues, and/or drug dependencies. The coordinator works closely with the jails' classification department in order to properly house individuals with mental health needs. Once housed, segregated, or placed in a holding cell, inmates receive evaluations and screenings performed by the coordinator, who then provides medication suggestions for medical providers. The department receives roughly 10 mental health requests from inmates every day; requests range from medication requests for depression, anxiety, detox, etc.

The Mental Health Coordinator also facilitates contact with Eastern State's Forensic Unit for Competency, who evaluates and restores competency for CCRJC's severely mentally ill inmates.

---

**A more in depth analysis of the both the medical and mental health departments will be conducted in 2015 with the intention of providing more statistics in the 2015 Annual Report.**



## FOOD SERVICE

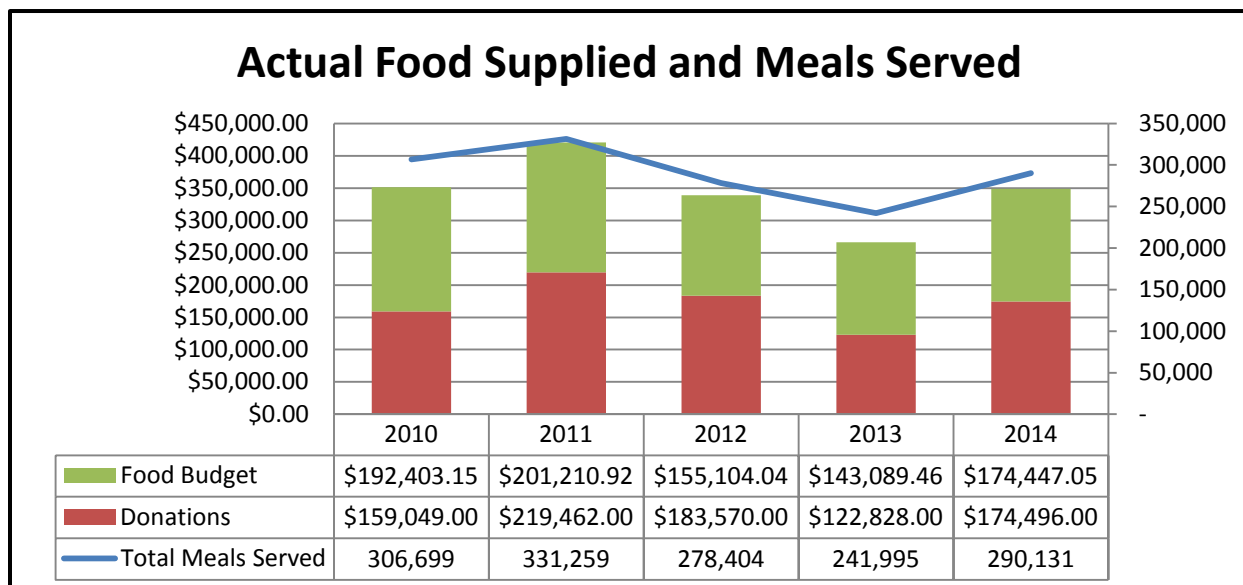
CCRJC's food service staff is comprised of 4 full time employees, a part time employee, and a sergeant who oversees the division. They are assisted by an average of 12 female inmate workers a day, who work in the kitchen 8 hours per day.

CCRJC receives generous food donations from Crunch Pak, McDougals & Sons, Blue Bird, Farmer Bean, Serve Wenatchee Valley, Salvation Army, Hospitality Ministries, NCW Food Distribution Center, Okanogan County Corrections, Quincy Foods, Food Pavilion, Martins Market Place, URM Cash & Carry, J & G Distributing and numerous other small community organizations.

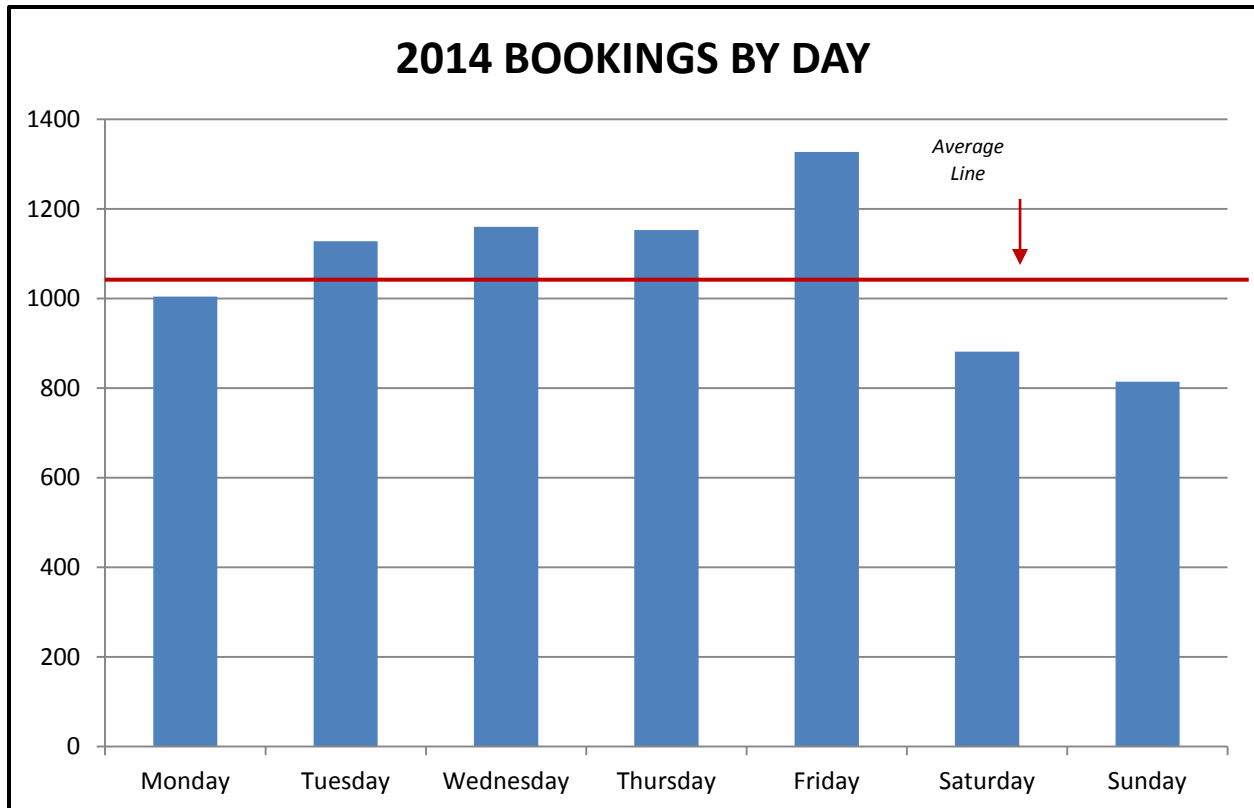
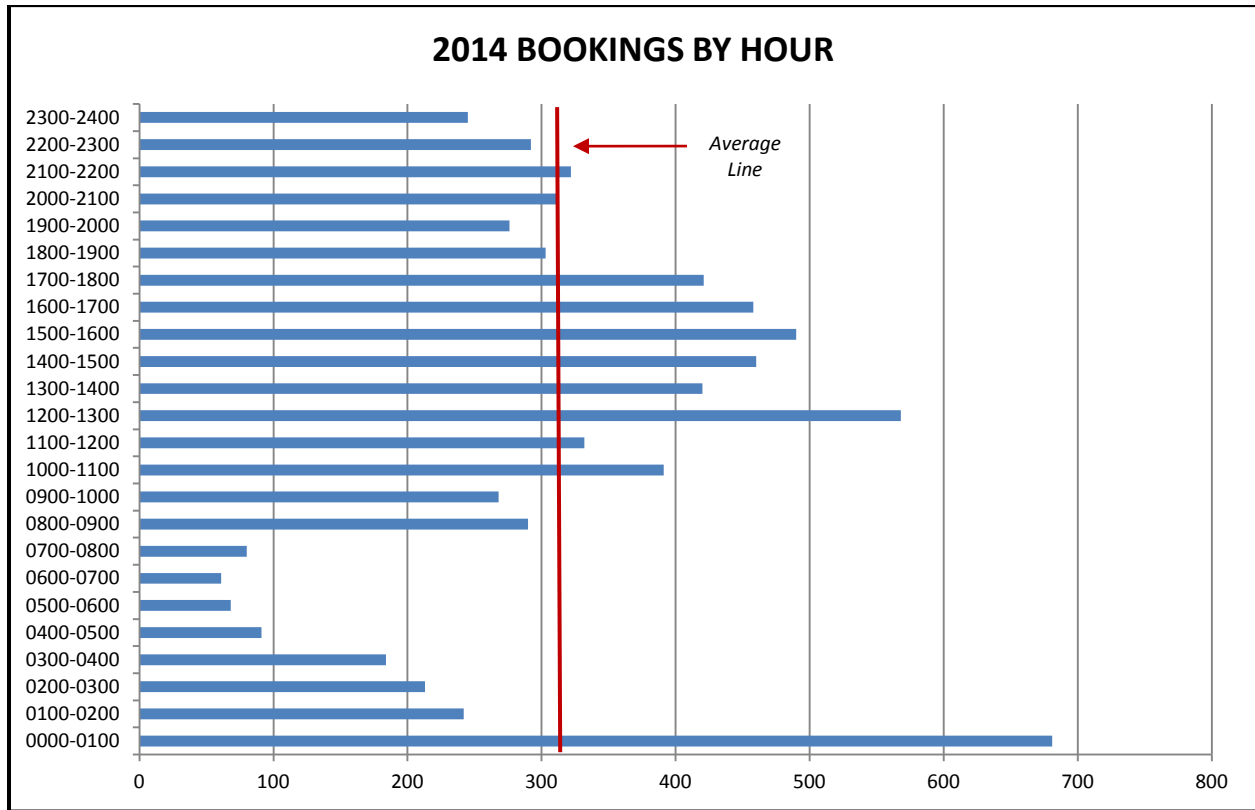
When CCRJC receives an abundance of product, we in turn contact and distribute these excess products to both the public and community organizations we work with in a sense of giving back to the community that has been so giving to us. This affords the businesses that donate an opportunity to write off the distressed or overstocked products with the knowledge that they are assisting in the aid of those in need.

There were 290,131 meals served in 2014. Combined with the donations listed below and our annual food budget, the meals we provided in 2014 were calculated at \$1.20 per plate.

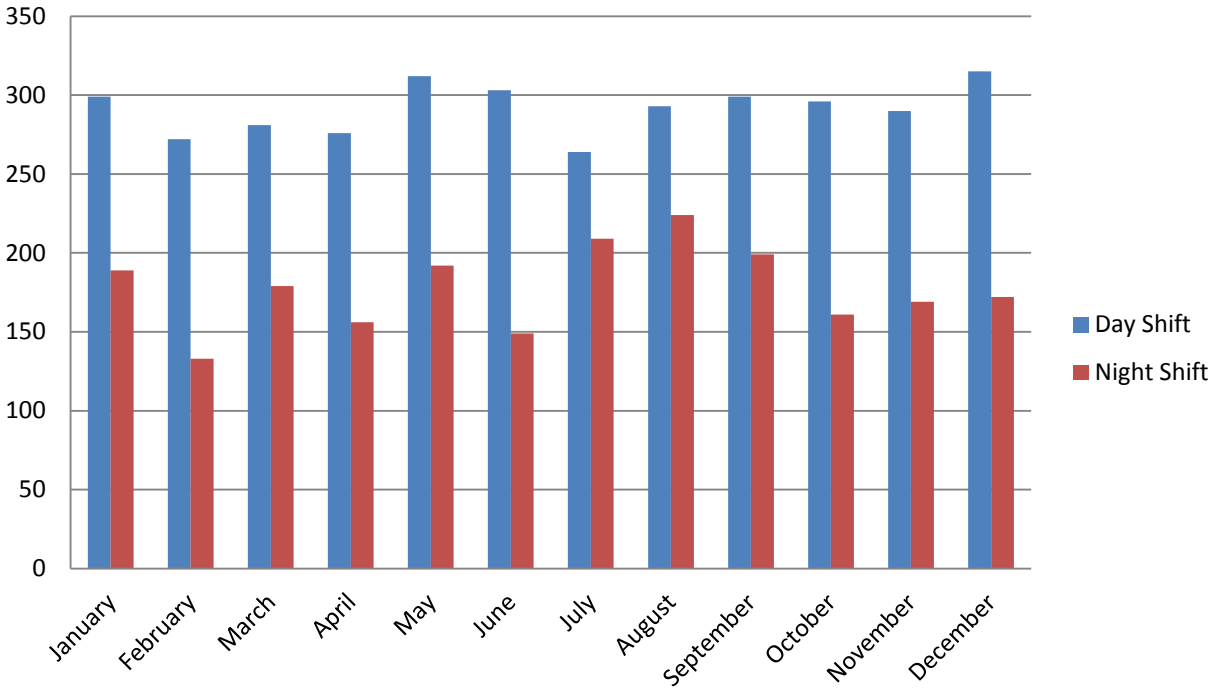
<b>4 Year Averages (2010-2014)</b>	
Jail Bookings	5,384
Donations	\$171,881.00
Food Supplied	\$173,251.00
Total Meals Served	289,698
<b>Price Per Meal</b>	<b>\$1.00</b>



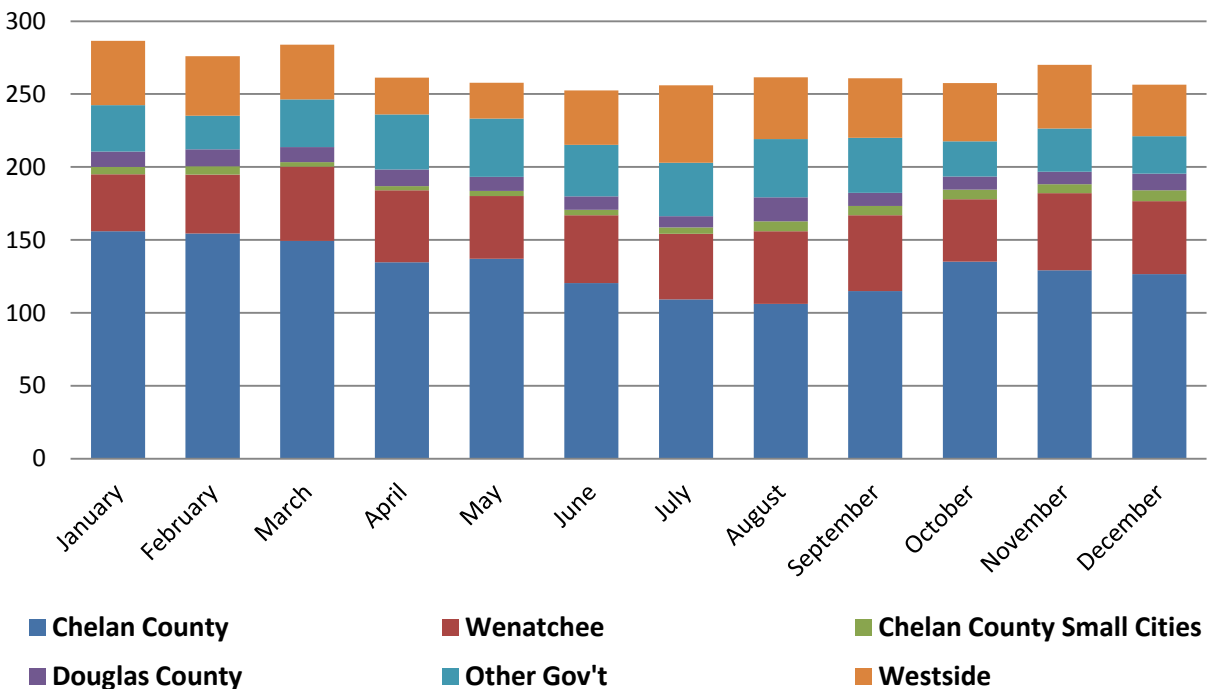
## FACILITY BOOKING AND INTAKE STATISTICS



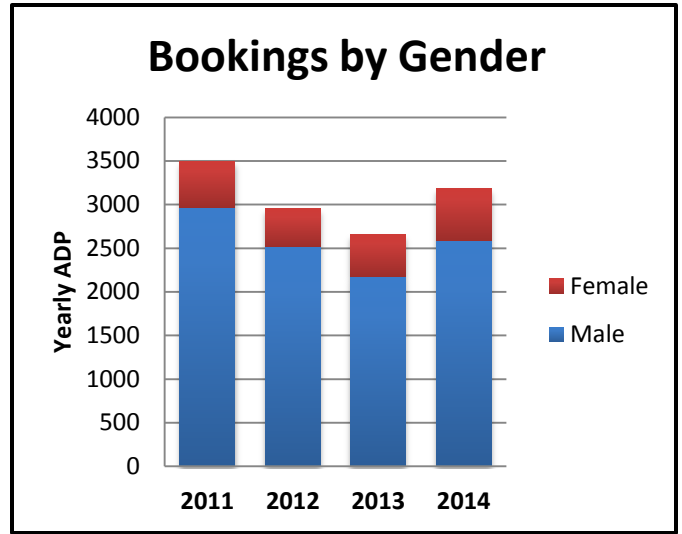
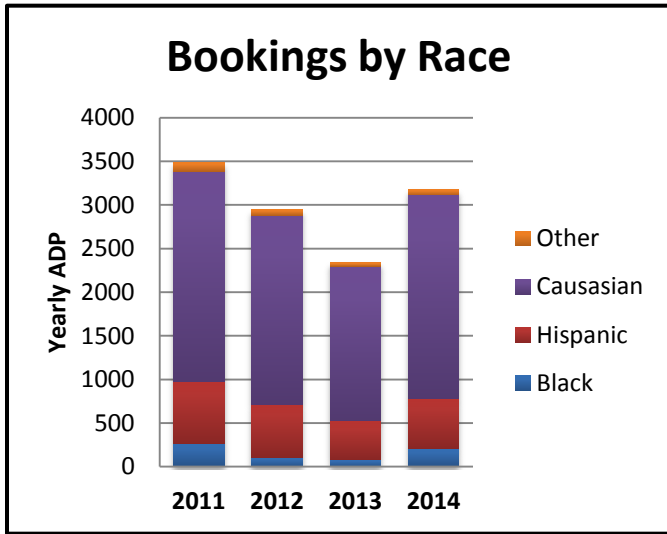
## 2014 BOOKINGS BY MONTH



## 2014 Monthly ADP by Agency



## FACILITY BOOKING DEMOGRAPHICS



## 2014 ORGANIZATIONAL CHART

